

SUPPLEMENTAL/BID BULLETIN NO. 1
For LBP-HOBAC-ITB-GS-20190521-02

PROJECT : Supply and Delivery of Steel Shelves/Cabinets at
Twenty (20) LANDBANK Offices, as follows:

Lot 1 – North-Central Luzon Offices
Lot 2 – Southern Luzon Offices
Lot 3 – Visayas Offices
Lot 4 – Mindanao Offices

IMPLEMENTOR : Procurement Department

DATE : July 11, 2019

This Supplemental/Bid Bulletin is issued to modify, amend and/or clarify certain items in the Bid Documents. This shall form an integral part of the Bid Documents.

Modifications, amendments and/or clarifications:

- The minimum specification and working drawings (Annex B), Section VII (Specifications) and Checklist of the Bidding Documents (Item No. 8 of the Eligibility and Technical Components) have been revised. Please see attached revised Annexes B-1 to B-9 and specified sections of the Bidding Documents.


ALWIN I. REYES, CSSP
Assistant Vice President
Head, Procurement Department and
HOBAC Secretariat

Specifications

Lot No.	Specification	Statement of Compliance
		<p>Bidders must state below either “Comply” or “Not Comply” against each of the individual parameters of each Specification stating the corresponding performance parameter of the equipment offered.</p> <p>Statements of “Comply” or “Not Comply” must be supported by evidence in a Bidders Bid and cross-referenced to that evidence. Evidence shall be in the form of manufacturer’s un-amended sales literature, unconditional statements of specification and compliance issued by the manufacturer, samples, independent test data etc., as appropriate. A statement that is not supported by evidence or is subsequently found to be contradicted by the evidence presented will render the Bid under evaluation liable for rejection. A statement either in the Bidders statement of compliance or the supporting evidence that is found to be false either during Bid evaluation, post-qualification or the execution of the Contract may be regarded as fraudulent and render the Bidder or supplier liable for prosecution subject to the provisions of ITB Clause 3.1(a)(ii) and/or GCC Clause 2.1(a)(ii)</p>
1 2 3 4	<p>Supply and Delivery of Steel Shelves/Cabinets at Twenty (20) LANDBANK Offices categorized as follows:</p> <p>1 LANDBANK North-Central Luzon Offices 2 LANDBANK Southern Luzon Offices 3 LANDBANK Visayas Offices 4 LANDBANK Mindanao Offices</p> <p>Minimum specifications and working drawings per attached Revised Annexes B-1 to B-9.</p> <p>The following documents shall be submitted inside the First Envelope:</p>	<p>Please state here either “Comply” or “Not Comply”</p>

<p>a) Brochure or any other official documents coming from the manufacturer indicating the complete specifications of the offered steel shelves/cabinets.</p> <p>b) For current suppliers of LANDBANK, Certificate of Satisfactory Performance (for completed contracts) or Certificate of No Delayed Projects (for on-going contracts) issued by the Head, Project Management and Engineering Department not earlier than 30 calendar days prior to the deadline of submission of bid.</p> <p>The lowest calculated bidder must submit working drawings within five (5) calendar days after the opening of bids for evaluation/approval.</p> <p>Mock-up samples shall be submitted within fourteen (14) calendar days after approval of working drawings.</p> <p>Bidders whose offered products had been previously evaluated by LANDBANK and found to be complying with the Bank's specifications may no longer be required to comply with this requirement.</p> <p>The winning supplier must affix a sticker/tag/label with company name and after-sales contact numbers or equivalent form of marking on each of the steel cabinets/shelves.</p>	
---------------------------------------------------------------------------------------------------------------------------------------------------------------------------------------------------------------------------------------------------------------------------------------------------------------------------------------------------------------------------------------------------------------------------------------------------------------------------------------------------------------------------------------------------------------------------------------------------------------------------------------------------------------------------------------------------------------------------------------------------------------------------------------------------------------------------------------------------------------------------------------------------------------------------------------------------------------------------------------------------------------------------------------------------------------------------------------------------------------------------------------------------------------------------	--

Conforme:

Name of Bidder

Signature Over Printed Name of
Authorized Representative

Position

Checklist of Bidding Documents for Procurement of Goods and Services

Documents should be arranged as per this Checklist. Kindly provide folders or guides, dividers and ear tags with appropriate labels.

First Envelope - Eligibility and Technical Components

- **The First Envelope shall contain the following:**

- **Eligibility Documents – Class “A”**

Legal Eligibility Documents

1. PhilGEPS Certificate of Registration under Platinum Membership (all documents enumerated in its Annex A must be updated); or all of the following:
 - Registration Certificate from SEC, Department of Trade and Industry (DTI) for sole proprietorship, or CDA for cooperatives, or any proof of such registration as stated in the Bidding Documents;
 - Valid and current mayor's/business permit issued by the city or municipality where the principal place of business of the prospective bidder is located, or equivalent document for Exclusive Economic Zones or Areas; and
 - Tax Clearance per Executive Order 398, Series of 2005, as finally reviewed and approved by the BIR.

Technical Eligibility Documents

2. Duly notarized Omnibus Sworn Statement (sample form - Form No.6)
3. Duly notarized Secretary's Certificate attesting that the signatory is the duly authorized representative of the prospective bidder, and granted full power and authority to do, execute and perform any and all acts necessary and/or to represent the prospective bidder in the bidding, if the prospective bidder is a corporation, partnership, cooperative, or joint venture (sample form - Form No. 7).
4. Statement of the prospective bidder of all its ongoing government and private contracts, including contracts awarded but not yet started, if any, whether similar or not similar in nature and complexity to the contract to be bid, within the last five (5) years from the date of submission and receipt of bids. The statement shall include all information required in the sample form (Form No. 3).

5. Statement of the prospective bidder identifying its single largest completed contract similar to the contract to be bid, equivalent to at least fifty percent (50%) of the ABC supported with contract/purchase order, end-user's acceptance or official receipt(s) issued for the contract, within the relevant period as provided in the Bidding Documents. The statement shall include all information required in the sample form (Form No. 4).
6. Bid security in the prescribed form, amount and validity period (ITB Clause 18.1 of the Bid Data Sheet).
7. Section VI - Schedule of Requirements with signature of bidder's authorized representative.
8. **Revised Section VII - Specifications with response on compliance and signature of bidder's authorized representative.**

Financial Eligibility Documents

9. The prospective bidder's audited financial statements, showing, among others, the prospective bidder's total and current assets and liabilities, stamped "received" by the BIR or its duly accredited and authorized institutions, for the preceding calendar year which should not be earlier than two (2) years from the date of bid submission.
10. The prospective bidder's computation for its Net Financial Contracting Capacity (NFCC) following the sample form (Form No. 5), or in the case of Procurement of Goods, a committed Line of Credit from a Universal or Commercial Bank.

○ **Eligibility Documents – Class "B"**

11. Valid joint venture agreement (JVA), in case the joint venture is already in existence. In the absence of a JVA, duly notarized statements from all the potential joint venture partners stating that they will enter into and abide by the provisions of the JVA in the instance that the bid is successful shall be included in the bid. Failure to enter into a joint venture in the event of a contract award shall be ground for the forfeiture of the bid security. Each partner of the joint venture shall submit its legal eligibility documents. The submission of technical and financial eligibility documents by any of the joint venture partners constitutes compliance, provided, that the partner responsible to submit the NFCC shall likewise submit the statement of all its ongoing contracts and Audited Financial Statements.

○ **Technical Documents**

12. Brochures or any other official documents coming from the manufacturer indicating the complete specifications of the offered steel shelves/cabinets.
13. For previous/current suppliers of LANDBANK, Certificate of Satisfactory Performance (for completed contracts) or Certificate of No Delayed Projects (for on-going contracts) issued by the Head, Project Management and Engineering Department not earlier than 30 calendar days prior to the deadline of submission of bid.

○ **Post-Qualification Documents – (Non-submission of the following documents may result in bidder's post-disqualification):**

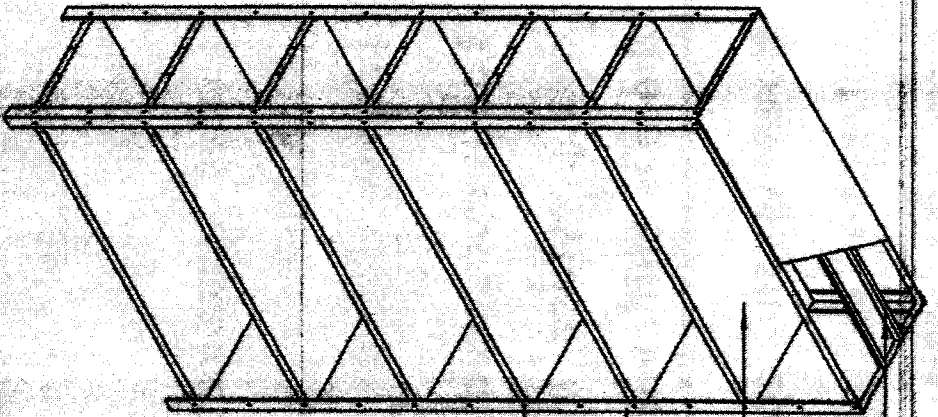
14. Business Tax Returns per Revenue Regulations 3-2005 (BIR No.2550 Q) VAT or Percentage Tax Returns for the last two (2) quarters filed manually or through EFPS.
15. Income Tax Return for 2017 filed manually or through EFPS.

Second Envelope – Financial Component

● **The Second Envelope shall contain the following:**

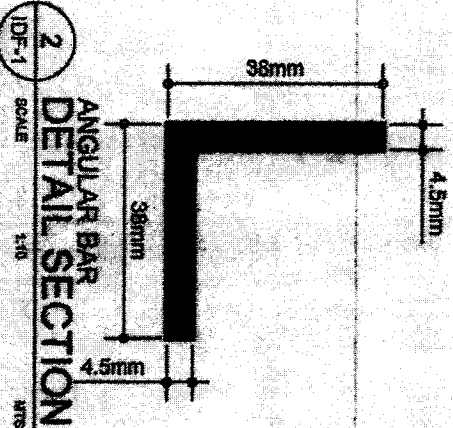
1. Duly filled out Bid Form signed by the bidder's authorized representative (sample form - Form No.1)
2. Duly filled out Schedule of Prices signed by the bidder's authorized representative (sample form - Form No.2)

CLASS D

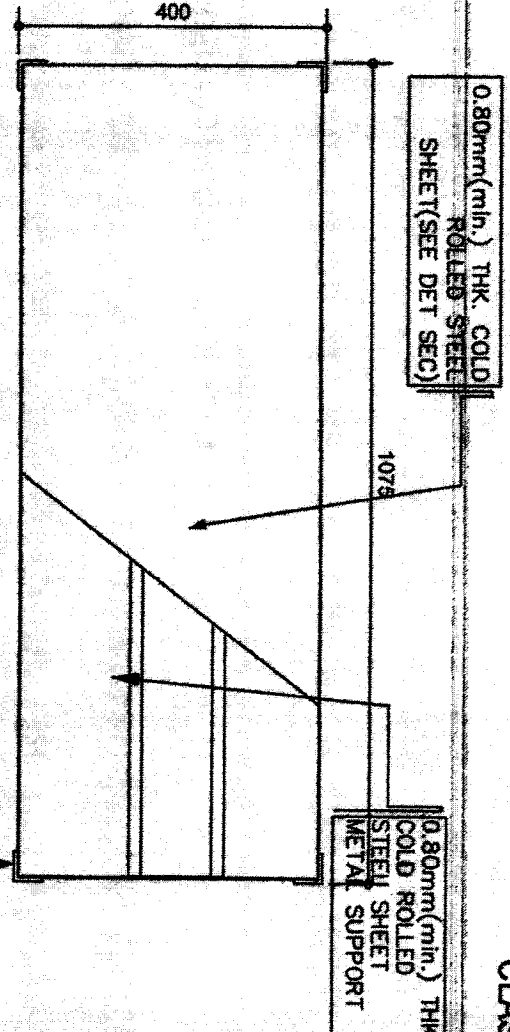


1
IDF-1
NO. 1
SCALE 1:10
STEEL OPEN SHELVES
ISOMETRIC VIEW

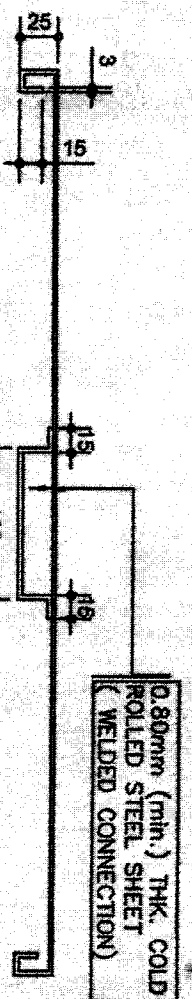
- 0.80mm(min.) THK. COLD ROLLED STEEL SHEET (WELDED CONNECTION)
- 0.80mm (min.) THK. COLD ROLLED STEEL SHEET (SEE DET SEC)
- 4.5mm(min.) x 38mm x 38mm ANGULAR STEEL VERTICAL FRAME
- 10mm ϕ BOLT WITH WELDED NUT ON FRAME



2
IDF-1
SCALE 1:10
ANGULAR BAR
DETAIL SECTION



3
IDF-1
SCALE 1:20
STIFFENER
DETAILED PLAN



4
IDF-1
SCALE 1:10
STIFFENER
DETAIL SECTION

NOTE:
1. O.D. & PAINT FINISH COLOR : DEEP GREEN
2. USE 4 BOLT CONNECTION FOR EACH MODULE SIDE



LANDMARK OF THE MINISTRIES
PROJECT MANAGEMENT & ENGINEERING DEPT.
100, 11, 12, 13, 14, 15, 16, 17, 18, 19, 20, 21, 22, 23, 24, 25, 26, 27, 28, 29, 30, 31, 32, 33, 34, 35, 36, 37, 38, 39, 40, 41, 42, 43, 44, 45, 46, 47, 48, 49, 50, 51, 52, 53, 54, 55, 56, 57, 58, 59, 60, 61, 62, 63, 64, 65, 66, 67, 68, 69, 70, 71, 72, 73, 74, 75, 76, 77, 78, 79, 80, 81, 82, 83, 84, 85, 86, 87, 88, 89, 90, 91, 92, 93, 94, 95, 96, 97, 98, 99, 100, 101, 102, 103, 104, 105, 106, 107, 108, 109, 110, 111, 112, 113, 114, 115, 116, 117, 118, 119, 120, 121, 122, 123, 124, 125, 126, 127, 128, 129, 130, 131, 132, 133, 134, 135, 136, 137, 138, 139, 140, 141, 142, 143, 144, 145, 146, 147, 148, 149, 150, 151, 152, 153, 154, 155, 156, 157, 158, 159, 160, 161, 162, 163, 164, 165, 166, 167, 168, 169, 170, 171, 172, 173, 174, 175, 176, 177, 178, 179, 180, 181, 182, 183, 184, 185, 186, 187, 188, 189, 190, 191, 192, 193, 194, 195, 196, 197, 198, 199, 200, 201, 202, 203, 204, 205, 206, 207, 208, 209, 210, 211, 212, 213, 214, 215, 216, 217, 218, 219, 220, 221, 222, 223, 224, 225, 226, 227, 228, 229, 230, 231, 232, 233, 234, 235, 236, 237, 238, 239, 240, 241, 242, 243, 244, 245, 246, 247, 248, 249, 250, 251, 252, 253, 254, 255, 256, 257, 258, 259, 260, 261, 262, 263, 264, 265, 266, 267, 268, 269, 270, 271, 272, 273, 274, 275, 276, 277, 278, 279, 280, 281, 282, 283, 284, 285, 286, 287, 288, 289, 290, 291, 292, 293, 294, 295, 296, 297, 298, 299, 300, 301, 302, 303, 304, 305, 306, 307, 308, 309, 310, 311, 312, 313, 314, 315, 316, 317, 318, 319, 320, 321, 322, 323, 324, 325, 326, 327, 328, 329, 330, 331, 332, 333, 334, 335, 336, 337, 338, 339, 340, 341, 342, 343, 344, 345, 346, 347, 348, 349, 350, 351, 352, 353, 354, 355, 356, 357, 358, 359, 360, 361, 362, 363, 364, 365, 366, 367, 368, 369, 370, 371, 372, 373, 374, 375, 376, 377, 378, 379, 380, 381, 382, 383, 384, 385, 386, 387, 388, 389, 390, 391, 392, 393, 394, 395, 396, 397, 398, 399, 400, 401, 402, 403, 404, 405, 406, 407, 408, 409, 410, 411, 412, 413, 414, 415, 416, 417, 418, 419, 420, 421, 422, 423, 424, 425, 426, 427, 428, 429, 430, 431, 432, 433, 434, 435, 436, 437, 438, 439, 440, 441, 442, 443, 444, 445, 446, 447, 448, 449, 450, 451, 452, 453, 454, 455, 456, 457, 458, 459, 460, 461, 462, 463, 464, 465, 466, 467, 468, 469, 470, 471, 472, 473, 474, 475, 476, 477, 478, 479, 480, 481, 482, 483, 484, 485, 486, 487, 488, 489, 490, 491, 492, 493, 494, 495, 496, 497, 498, 499, 500, 501, 502, 503, 504, 505, 506, 507, 508, 509, 510, 511, 512, 513, 514, 515, 516, 517, 518, 519, 520, 521, 522, 523, 524, 525, 526, 527, 528, 529, 530, 531, 532, 533, 534, 535, 536, 537, 538, 539, 540, 541, 542, 543, 544, 545, 546, 547, 548, 549, 550, 551, 552, 553, 554, 555, 556, 557, 558, 559, 560, 561, 562, 563, 564, 565, 566, 567, 568, 569, 570, 571, 572, 573, 574, 575, 576, 577, 578, 579, 580, 581, 582, 583, 584, 585, 586, 587, 588, 589, 590, 591, 592, 593, 594, 595, 596, 597, 598, 599, 600, 601, 602, 603, 604, 605, 606, 607, 608, 609, 610, 611, 612, 613, 614, 615, 616, 617, 618, 619, 620, 621, 622, 623, 624, 625, 626, 627, 628, 629, 630, 631, 632, 633, 634, 635, 636, 637, 638, 639, 640, 641, 642, 643, 644, 645, 646, 647, 648, 649, 650, 651, 652, 653, 654, 655, 656, 657, 658, 659, 660, 661, 662, 663, 664, 665, 666, 667, 668, 669, 670, 671, 672, 673, 674, 675, 676, 677, 678, 679, 680, 681, 682, 683, 684, 685, 686, 687, 688, 689, 690, 691, 692, 693, 694, 695, 696, 697, 698, 699, 700, 701, 702, 703, 704, 705, 706, 707, 708, 709, 710, 711, 712, 713, 714, 715, 716, 717, 718, 719, 720, 721, 722, 723, 724, 725, 726, 727, 728, 729, 730, 731, 732, 733, 734, 735, 736, 737, 738, 739, 740, 741, 742, 743, 744, 745, 746, 747, 748, 749, 750, 751, 752, 753, 754, 755, 756, 757, 758, 759, 760, 761, 762, 763, 764, 765, 766, 767, 768, 769, 770, 771, 772, 773, 774, 775, 776, 777, 778, 779, 780, 781, 782, 783, 784, 785, 786, 787, 788, 789, 790, 791, 792, 793, 794, 795, 796, 797, 798, 799, 800, 801, 802, 803, 804, 805, 806, 807, 808, 809, 810, 811, 812, 813, 814, 815, 816, 817, 818, 819, 820, 821, 822, 823, 824, 825, 826, 827, 828, 829, 830, 831, 832, 833, 834, 835, 836, 837, 838, 839, 840, 841, 842, 843, 844, 845, 846, 847, 848, 849, 850, 851, 852, 853, 854, 855, 856, 857, 858, 859, 860, 861, 862, 863, 864, 865, 866, 867, 868, 869, 870, 871, 872, 873, 874, 875, 876, 877, 878, 879, 880, 881, 882, 883, 884, 885, 886, 887, 888, 889, 890, 891, 892, 893, 894, 895, 896, 897, 898, 899, 900, 901, 902, 903, 904, 905, 906, 907, 908, 909, 910, 911, 912, 913, 914, 915, 916, 917, 918, 919, 920, 921, 922, 923, 924, 925, 926, 927, 928, 929, 930, 931, 932, 933, 934, 935, 936, 937, 938, 939, 940, 941, 942, 943, 944, 945, 946, 947, 948, 949, 950, 951, 952, 953, 954, 955, 956, 957, 958, 959, 960, 961, 962, 963, 964, 965, 966, 967, 968, 969, 970, 971, 972, 973, 974, 975, 976, 977, 978, 979, 980, 981, 982, 983, 984, 985, 986, 987, 988, 989, 990, 991, 992, 993, 994, 995, 996, 997, 998, 999, 1000

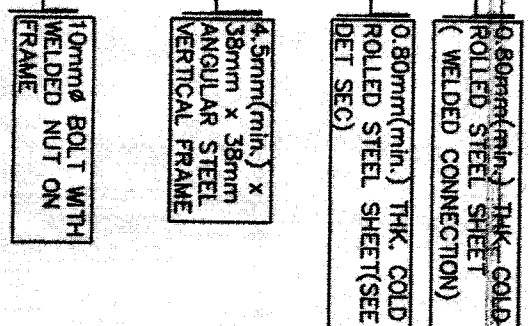
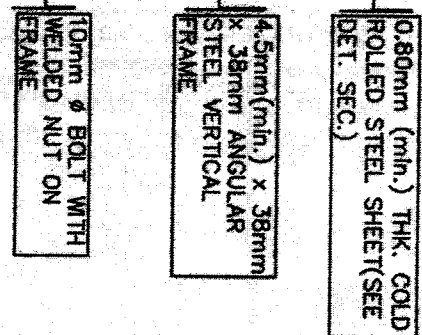
STEEL OPEN SHELVES

ALEXANDER & LAZARUS
1900, PHED

DESIGNER: TEL: 0400
DRAWN BY: 24V
DATE: November 8, 2017
CHECKED BY: X
DATE: November 8, 2017

1-2

REVISED ANNEX B-1



FRONT ELEVATION

IDF-2

BOYLE

六五

MTS

2 LEFT SIDE ELEVATION

2
IDF-2

GOAL

1:20

WTS

CLASS D



**LANDMARK OF THE PHILIPPINES
PROJECT MANAGEMENT & ENGINEERING DEPT.**
1000 M. H. ROAD, PLAZA ST.
CORNER DR. DELICADO ST., MALABON, MANILA

PROJECT TITLE:

STEEL OPEN SHELVES

RECOMMENDATIONS AND APPROVAL:

~~ALEXANDER S LYDARD~~
~~Head PMED~~

1. SUBMIT SAMPLES FOR PMED APPROVAL.
2. PROVIDE SHOP DRAWINGS FOR PMED APPROVAL PRIOR TO FABRICATION.

DESIGN T5U#1120

DRAWN BY: *[Signature]* ZHV

DATE: November 8, 2017

DATE: November 3, 2017

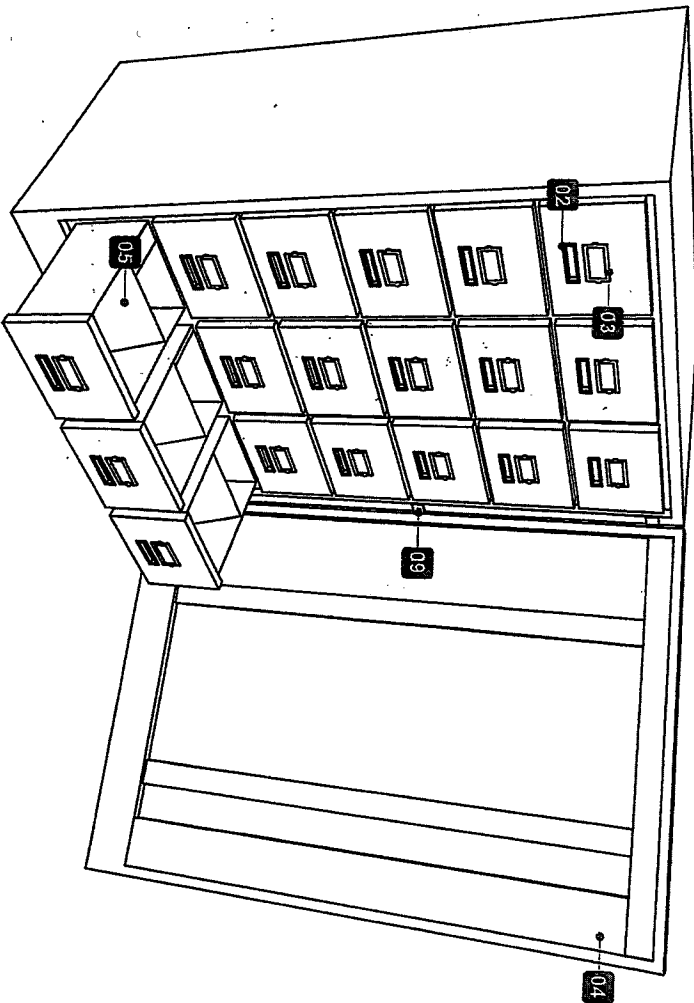
REV. 1 (11-08-2017)
SHEET NO.:

N
:
N

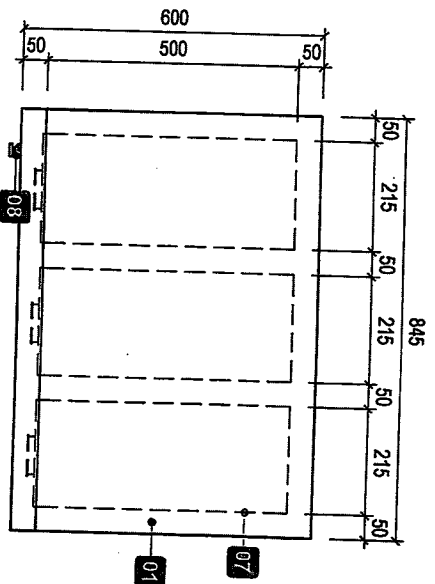
REVISED ANNEX B-2

NOTES:
 • WRITTEN DIMENSIONS ON THESE DRAWINGS SHALL HAVE PRECEDENCE OVER SCALED DIMENSIONS.
 • CONTRACTOR/SUPPLIER SHALL VERIFY AND BE RESPONSIBLE FOR ALL DIMENSIONS AND CONDITIONS OF THE JOB.
 • SUPPLIER SHALL SUBMIT SHOP DRAWINGS TO PMED FOR APPROVAL PRIOR TO FABRICATION.
 • SUPPLIER TO COORDINATE WITH THE END-USER ON THE SCHEDULE OF DELIVERY OF THE SAID ITEM..

CLASS D



PERSPECTIVE



DETAILED PLAN
 SCALE 1:16

TECHNICAL SPECIFICATIONS:

- 01 - GA.# 20 M.S. PLATE NON-INSULATED TEXTURED FINISH PATTERN TO MOSLER GRAY 6033
- 02 - METAL DRAWER HANDLE (SUBMIT TO PMED FOR APPROVAL BEFORE FABRICATION)
- 03 - METAL LABEL/NAME PLATE HOLDER WITH HARD PLASTIC FACING (SUBMIT TO PMED FOR APPROVAL BEFORE FABRICATION)
- 04 - ENCLOSED LOCKING SYSTEM
- 05 - GA.# 18 MOVABLE DIVIDER ON POWDER COATED FINISH (PROVIDE RAIL FOR DIVIDER)
- 06 - ROLLER WHEELS
- 07 - LINE OF DRAWERS
- 08 - METAL PADLOCKING-HANDLE
- 09 - PIN TYPE HINGES, MADE OF HEAVY ROLLED STEEL W/ THRUST WASHER

REVISED ANNEX B-3



LANDBANK OF THE PHILIPPINES
 PROJECT MANAGEMENT & ENGINEERING DEPT.
 1598 M.H. DEL PILAR ST., CORNER DR. QUINTOS ST., MALATE,
 MANILA

TITLE:

**DETAIL OF SIGNATURE CARD CABINET
 (18-DRAWER)**

LANDBANK STANDARD DETAILS AND SPECIFICATIONS

RECOMMENDING APPROVAL:

SHEET CONTENT:

DESIGN:

PMED-TSU

SHEET NO:

DRAWN:

MAK

DATE:

JULY 05, 2019

CHECKED:

ALMISLANG

DATE:

A
1

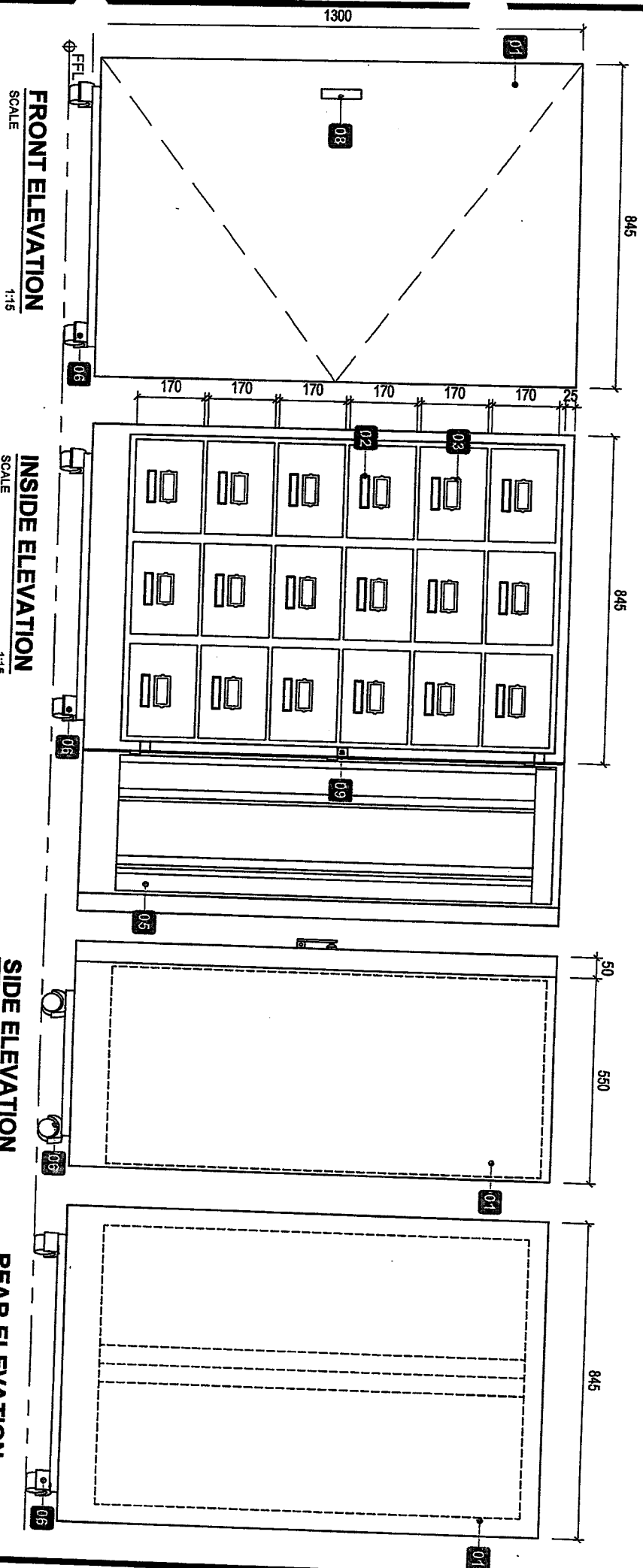
Alexander S. Lazaro
 ALEXANDER S. LAZARO
 Head, PMED

TECHNICAL SPECIFICATIONS
 NOTES
 PERSPECTIVE

NOTES:

- WRITTEN DIMENSIONS ON THESE DRAWINGS SHALL HAVE PRECEDENCE OVER SCALED DIMENSIONS.
- CONTRACTOR/SUPPLIER SHALL VERIFY AND BE RESPONSIBLE FOR ALL DIMENSIONS AND CONDITIONS OF THE JOB.
- SUPPLIER TO SUBMIT SHOP DRAWINGS TO PMED FOR APPROVAL PRIOR TO FABRICATION.
- SUPPLIER TO COORDINATE WITH THE END-USER ON THE SCHEDULE OF DELIVERY OF THE SAID ITEM.

CLASS D



FRONT ELEVATION

SCALE 1:15

INSIDE ELEVATION

SCALE 1:15

SIDE ELEVATION

SCALE 1:15

REAR ELEVATION

SCALE 1:15



LANDBANK OF THE PHILIPPINES

PROJECT MANAGEMENT & ENGINEERING DEPT.

1598 M.H. DEL PILAR ST., CORNER DR. QUINTOS ST., MALATE, MANILA

TITLE:

**DETAIL OF SIGNATURE CARD CABINET
(18-DRAWER)**

LANDBANK STANDARD DETAILS AND SPECIFICATIONS

RECOMMENDING APPROVAL:

ALEXANDER S. LAZARO
JMD, PMED

SHEET CONTENT:

FRONT ELEVATION
REAR ELEVATION

DESIGN: PMED-TSU

DRAWN: MAK

DATE: JUL 05, 2019

CHECKED: J. MINGLANG

DATE:

SHEET NO:

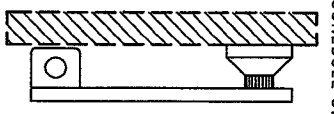
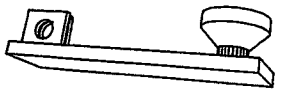
A
2

REVISED ANNEX B-4

NOTES

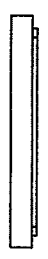
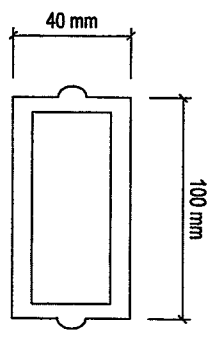
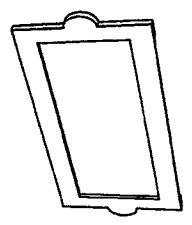
- WRITTEN DIMENSIONS ON THESE DRAWINGS SHALL HAVE PRECEDENCE OVER SCALED DIMENSIONS.
- CONTRACTOR/SUPPLIER SHALL VERIFY AND BE RESPONSIBLE FOR ALL DIMENSIONS AND CONDITIONS OF THE JOB.
- SUPPLIER TO SUBMIT SHOP DRAWINGS TO PMED PRIOR TO FABRICATION.
- SUPPLIER TO COORDINATE WITH THE END-USER ON THE SCHEDULE OF DELIVERY OF THE SAID ITEM.

CLASS D



ISOMETRIC VIEW

SIDE VIEW



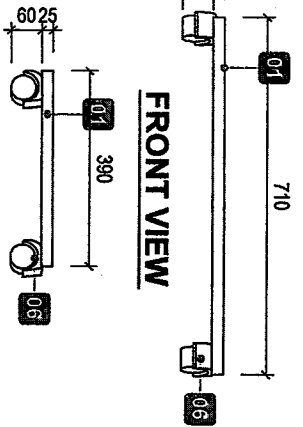
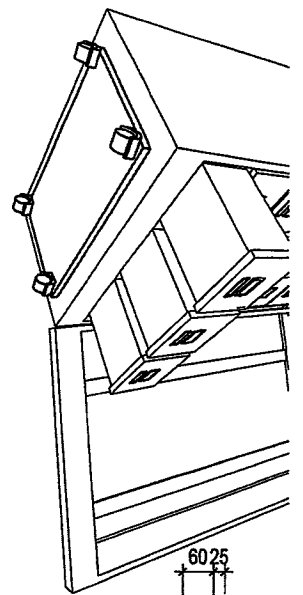
ISOMETRIC VIEW

FRONT VIEW

TOP VIEW

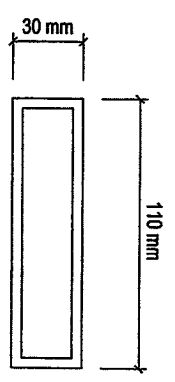
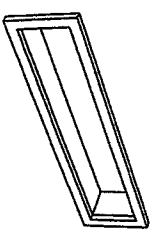
DETAIL OF PADLOCKING HANDLE

NOT TO SCALE



ISOMETRIC VIEW

FRONT VIEW



ISOMETRIC VIEW

TOP VIEW

DETAIL OF ROLLER WHEELS

NOT TO SCALE

DETAIL OF METAL DRAWER HANDLE

NOT TO SCALE



LANDBANK OF THE PHILIPPINES
PROJECT MANAGEMENT & ENGINEERING DEPT.
1598 M.H. DEL PILAR ST., CORNER DR. QUINTOS ST., MALATE, MANILA

DETAIL OF SIGNATURE CARD CABINET (18-DRAWER)

TITLE:

RECOMMENDING APPROVAL:

SHEET CONTENT:

DESIGN: PMED-TSU

SHEET NO:

DRAWN: MAK

DATE: JULY 05, 2019

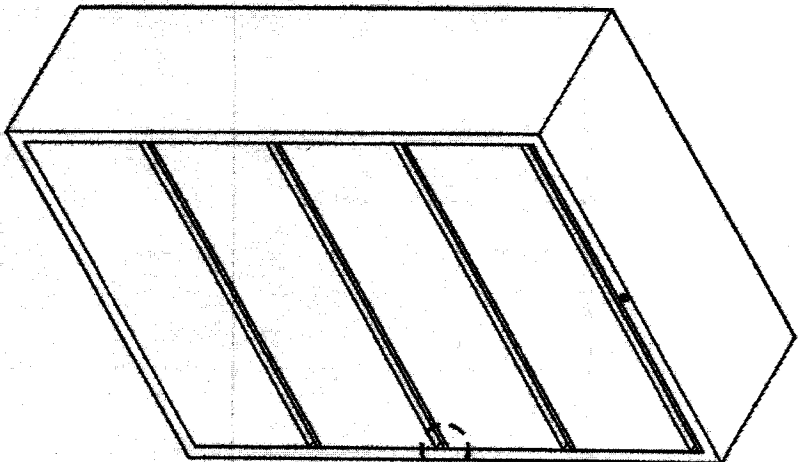
CHECKED: JMS/LANG

DATE:

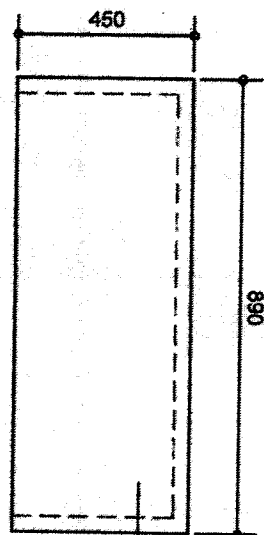
ALEXANDER S. LAZARO
HEAD, PMED

DETAIL OF PADLOCKING HANDLE
DETAIL OF NAME HOLDER
DETAIL OF METAL DRAWER HANDLE
DETAIL OF ROLLER WHEELS

A
3

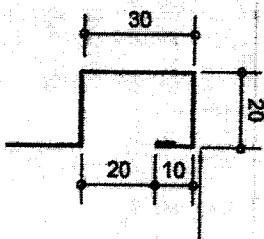


3
IDF-3



GA 18 COLD ROLLED METAL SHEET W/BENDED SIDES & HANDLE (SEE DETAIL OF COATED FINISH PATTERN TO PALE OLIVE 3007 FORMICA)

2
IDF-3
LATERAL FILING CABINET
DETAILED PLAN
SCALE: 1:15 METERS



GA 18 OR THICKER BENDED STEEL DRAWER HANDLE ON POWDER COATED FINISH PATTERN TO PALE OLIVE 3007 FORMICA

3
IDF-3
DRAWER HANDLE
DETAILED SECTION
SCALE: 1:2 METERS

TECHNICAL SPECIFICATIONS:

1. ALL WELDED STEEL FRAME CONSTRUCTION W/ BENDED FRAMES FOR STABILITY.
2. GA 18 BENDED FRAMING AND OTHER PANELS COLD ROLLED STEEL.
3. ALL METAL FINISHES SHALL BE POWDER COATED BAKED FINISH (PATTERN TO PALE OLIVE 3007 FORMICA).
4. PROVIDE 50 LBS. COUNTERWEIGHT TO PREVENT THE UNIT FROM TUMBLING OVER.
5. NYLON BUTTONS @ SIDES OF DRAWER FACE TO PREVENT METAL TO METAL CONTACT.
6. INTERLOCKING METAL SYSTEM MECHANISM INTEGRATED TO SLIDES ALLOWING ONE DRAWER TO BE OPENED AT A TIME.
7. REINFORCED VERTICAL/HORIZONTAL C FRAMES FOR STABILITY.
8. STANDARD LATERAL DRAWER BINS ARE 16" DEEP, 9-1/2" HIGH AND 26-5/8" 32-5/8" OR 38-5/8" WIDE.

NOTE:

- USE FULL EXTENSION SLIDES (ALL STEEL BALL-BEARING FULL EXTENSION SLIDES WITH BUILT-IN "ANTI-REBOUND" FEATURES)



LANDBANK OF THE PHILIPPINES
PROJECT MANAGEMENT & ENGINEERING DEPT.
CORNER DR. GABRIEL ST., MALLATE, MANILA

PROJECT TITLE

DETAIL OF
LATERAL FILING CABINET
(4 DRAWER)

RECOMMENDING APPROVAL

NOTES:

SUBMIT SAMPLES FOR
1. FINISH APPROVAL
2. PROVIDE 50 LBS.
COUNTERWEIGHT FOR PALE
OLIVE 3007 FORMICA

DESIGN:

PMED

SHEET NO. 1

DRAWN BY

24V

DATE

November 8, 2017

CHECKED BY:

24V

DATE

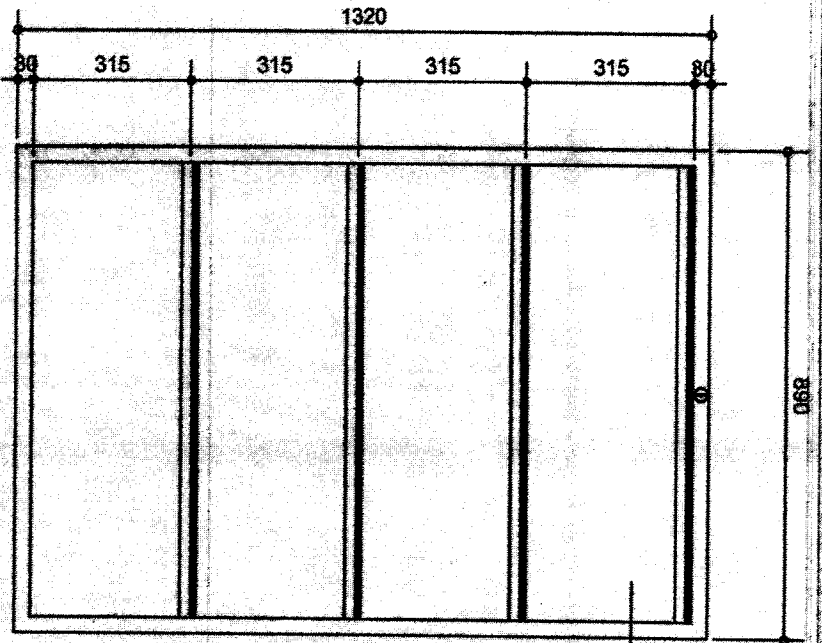
November 8, 2017

IFC-3 of 8

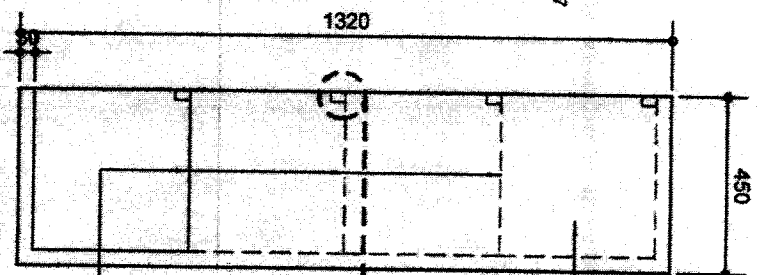
REV 1.0 (1.08.2017)

REVISED ANNEX

B-6



1
IDF-4
SCALE 1:15
METERS
LATERAL FILING CABINET (4 DRAWER)
DETAILED ELEVATION



2
IDF-4
SCALE 1:15
METERS
LATERAL FILING CABINET (4 DRAWER)
DETAILED SIDE ELEVATION

- TECHNICAL SPECIFICATIONS:**
1. ALL WELDED STEEL FRAME CONSTRUCTION W/ BENDED FRAMES FOR STABILITY.
 2. GA. 18 BENDED FRAMING AND OTHER PANELS COLD ROLLED STEEL.
 3. ALL METAL FINISHES SHALL BE POWDER COATED BAKED FINISH (PATTERN TO PALE OLIVE 3007 FORMICA).
 4. PROVIDE 50 LBS. COUNTERWEIGHT TO PREVENT THE UNIT FROM TUMBLING OVER.
 5. NYLON BUTTONS @ SIDES OF DRAWER FACE TO PREVENT METAL TO METAL CONTACT.
 6. INTERLOCKING METAL SYSTEM MECHANISM INTEGRATED TO SLIDES ALLOWING ONE DRAWER TO BE OPENED AT A TIME.
 7. REINFORCED VERTICAL/HORIZONTAL C FRAMES FOR STABILITY.
 8. STANDARD LATERAL DRAWER BINS ARE 18" DEEP, 9-1/2" HIGH AND 28-5/8" 32-5/8" OR 36-5/8" WIDE.

NOTE:
• USE FULL EXTENSION SLIDES (ALL STEEL BALL-BEARING FULL EXTENSION SLIDES WITH BUILT-IN "ANTI-REBOUND" FEATURES)



LANDBANK OF THE PHILIPPINES
PROJECT MANAGEMENT & ENGINEERING DEPT.
1088 14. 11. COR. P. 4th ST.
CORNER DR. GINTO ST. WALKER, MANILA

PROJECT TITLE

DETAIL OF
LATERAL FILING CABINET
(4 DRAWER)

RECOMMENDING APPROVAL

NOTES

1. SUBMIT DRAWING FOR PNEED APPROVAL.
2. PROVIDE SHOP DRAWINGS FOR PNEED APPROVAL PRIOR TO FABRICATION.

DESIGN

PNEED

SHEET NO.

DATE

CHECKED BY

DATE

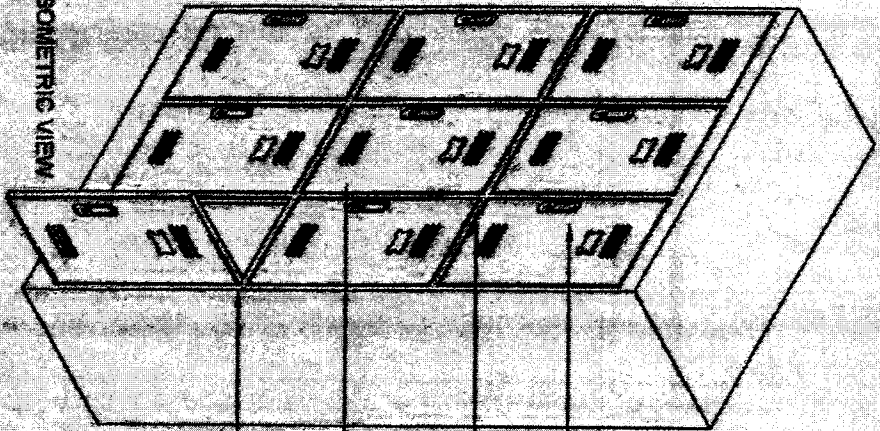
LFC-4 of 8

REV. 1 (11-08-2017)

REVISED ANNEX

B-1

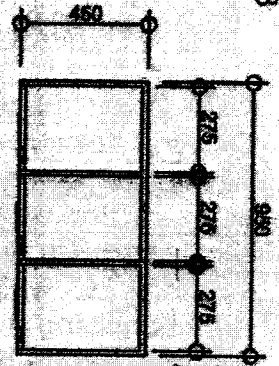
CLASS D Date revised: March 26, 2013



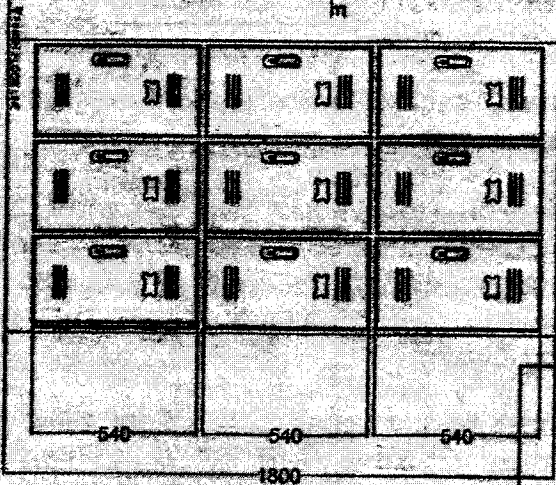
ISOMETRIC VIEW

NOTES:
1. ALL DIMENSIONS ARE IN MM.
2. SUBJECT COLOR SAMPLE & SHOP DRAWING TO
BE FOR APPROVAL PRIOR TO FABRICATION OF
UNIT.

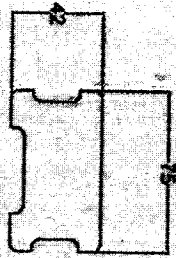
PRESSED OR BENDED
NAME PLATE HOLDER
PRESSED OR BENDED
LOUVER PLATE
VENTILATION SLIT
WITH 5MM OPENING
POLYPROPYLENE HANDLE
WITH BUILT-IN LOCK
(GA. 20 (0.8mm THK.)
GOLD ROLLED SHEET
POWDER COATED OR
OVEN BAKED FINISH
COLOR TRANSFORMER
G R A V E)



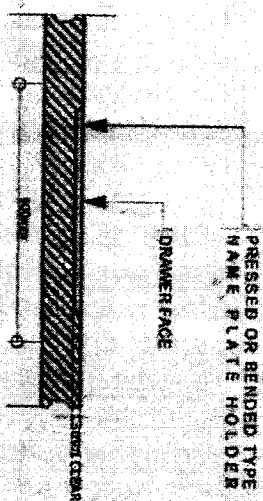
TOP VIEW



FRONT VIEW

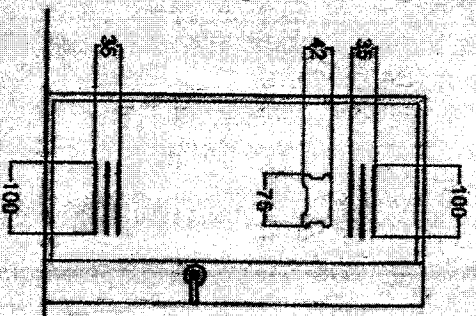


FRONT VIEW

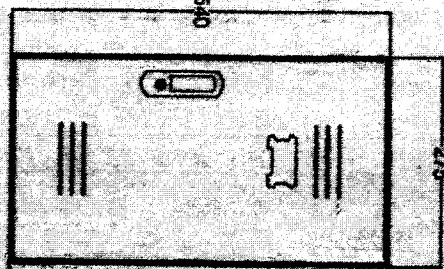


TOP VIEW

2 DETAIL OF NAME HOLDER
NOT TO SCALE



REAR VIEW



FRONT VIEW

3 DOOR PANEL DETAIL
SCALE 1:25

LANDMARK OF THE PHILIPPINES
PROJECT MANAGEMENT & ENGINEERING DEPT.
1000 N. A. C. STREET, 1000 N. A. C. STREET, 1000 N. A. C. STREET

TELLER'S LOCKER

RESEARCH & DESIGN
NAME: PIERO

NOTES:
1. SUBJECT SAMPLE AS FOR
PANEL & HANDLE
2. PROVIDE SHOP
DRAWING FOR THE
FABRICATION
DATE: _____
CHECKED BY: _____
DATE: _____

1-1